

**COVER STORY . . . . .**  
**. . . . . 1**  
**SOCIETY NEWS . . . . .**  
**. . . . .**  
**ANNOUNCEMENTS . . . . .**  
**. . . . .**  
**UPCOMING MEETINGS . . . . .**  
**. . . . .**  
**CONTRIBUTED ARTICLES . . . . .**  
**. . . . .**  
**FMCS OFFICERS . . . . .**  
**. . . . .**  
**COMMITTEES . . . . .**  
**PARTING SHOT . . . . .**



**Survey Guidelines and Techniques Workshop  
 August 10 – 13, 2020  
 Duck River, Tennessee**

Where to sample? How to sample? How do you apply the data? What does it all mean???? These are questions everyone who samples freshwater mussels has had to answer. The FMCS 2020 Guidelines and Techniques Workshop has been designed to provide you with the answers. Whether you are a beginning biologist or an experienced malacologist, we all need to collect mollusks, and interpret and apply the data.

This Workshop will include two levels of content: for introductory/intermediate field workers, and for those with more experience, but there will be overlap depending on participant's interest. The content for the introductory and intermediate group will cover equipment and design for sampling mussels, including

sample size and the amount of effort to ‘adequately’ sample a site or a species. Field instruction for this group will include techniques such as qualitative, semi-quantitative and quantitative sampling, habitat measurements, protocol implementation, data collection and analysis, as well as quality assurance/quality control.

The content for the more experienced group will cover information on data applications, including density and abundance, mark-recapture, population estimates, as well as estimates of survival and mortality, and mussel mortality evaluation. Field techniques for this group will include non-traditional sampling, such as, marking and tagging mussels, collection and processing for genetic analysis and eDNA, and mortality events and valuation.

The Workshop will include both lecture and field-based sessions, a poster session, evening mixers, and an optional field trip. An introductory session, providing an overview of sampling protocols, will be presented by Dave Smith (U.S. Geological Survey). Other presenters include: Janet Clayton (West Virginia Department of Natural Resources), Heidi Dunn (EcoAnalysts, Inc.), Matt Ashton (Maryland Department of Natural Resources), and Megan Bradley (U.S. Fish and Wildlife Service), and others.

### **Schedule overview:**

#### August

- 10 Monday – Arrival, Registration, Evening Mixer
- 11 Tuesday – Breakfast, Workshop overview, Lunch, Lecture and Field Sessions, Poster Session and Mixer (food provided)
- 12 Wednesday – Breakfast, Lecture and Field Sessions, Lunch, Lecture and Field Sessions, Dinner, “Town Hall” Discussion
- 13 Thursday – Field Trip, Departure

### **Poster Session:**

The poster session will take place on Tuesday evening, August 11. Posters will not be limited in topic and can include a wide variety of information and research pertinent to freshwater mollusks. See the Call for Abstracts for details and instructions for submitting abstracts on the Workshop web page: [https://molluskconservation.org/EVENTS/2020WORKSHOP/2020\\_FMCS-Workshop.html](https://molluskconservation.org/EVENTS/2020WORKSHOP/2020_FMCS-Workshop.html). Abstracts will be due no later than **May 31, 2020**.

### **Location and Lodging:**

This Workshop will be held at Henry Horton State Park in Chapel Hill, Tennessee, south of Nashville. This State Park is located along the banks of the Duck River, one of the most diverse ecosystems in the world. The Park has self-contained accommodations, meals will be catered by the Park’s Governor’s Table Restaurant, and the Tipped Canoe Lounge is on site.

Lodging also will be at Henry Horton State Park. All of the available rooms have been reserved at the Lodge in the Park, and eight cabins in the Park are also available. Reservations can be made online at: <https://tnstateparks.com/parks/henry-horton>. Please make every effort to book rooms with co-workers and friends, as space is limited. When booking, ask for the



**Freshwater Mollusk Conservation Society Rate** and provide our **Group Number: 4219**. Reservations must be made by **July 10**.

**Room Rates:**

- Two Double Beds Room in the Lodge: \$68.40/night plus taxes
- Two Double Beds Room in Motel: \$72.90/night plus taxes
- King Room: \$72.90/night plus taxes
- Suite Room (pullout sofa and small kitchen): \$86.40/night plus taxes
- Cabins (fully equipped 2-3 bedrooms): \$105-\$150/night plus taxes

Campsites for both recreational vehicles and tents are available. Camping rates vary between \$11-\$35/night, not including taxes and fees. Campsite reservations can be made by visiting: <https://reserve.tnstateparks.com/henry-horton/campsites> .

**Registration:**

Early registration will begin on March 9 and will close on June 15. Late registration will start on June 16 and will conclude on-site on August 10. Registration costs are:

Type	Early Registration (March 9 – June 15)	Late Registration (June 16 – August 10)
Regular FMCS member	\$200	\$225
Non-FMCS member	\$280	\$305
Student/Retiree FMCS member	\$150	\$175
Student/Retiree non-FMCS member	\$190	\$215

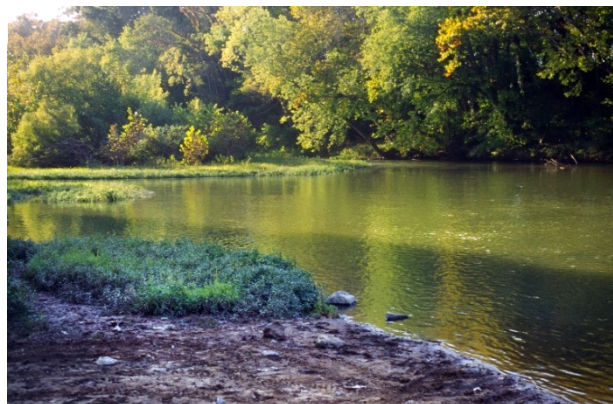
Register online at the Workshop web page: ([https://molluskconservation.org/EVENTS/2020WORKSHOP/2020\\_FMCS-Workshop.html](https://molluskconservation.org/EVENTS/2020WORKSHOP/2020_FMCS-Workshop.html)). Email reminders will be sent out when registration opens and just before early registration ends.

**Transportation:**

Henry Horton State Park is located in Chapel Hill, Tennessee, approximately 50 miles (1 hour) south of Nashville, Tennessee. Driving distance from Chattanooga is about 115 miles (2 hours), and from Memphis, about 220 miles (3.5 hours). Nashville International Airport is the closest airport; it has a variety of car rental vendors.

**What to bring:**

Middle Tennessee can be relatively warm and humid in mid-August, with average high temperatures around 90°F (32°C) and lows around 68°F (20°C). Water temperature in the Duck River typically is in the mid-70s F (low-20s C) in mid-August. This is a hands-on Workshop, so come prepared to get in the water and get dirty. Bring a mask and snorkel, for sure, and a wetsuit if you want one. Otherwise, bring clothes and shoes you don't mind getting wet. Feel free to bring any other field gear you typically use in the water. Don't forget your sunscreen and your camera. Casual clothes will be appropriate at all other times.



**Field Trip:**

On Thursday August 13, Workshop attendees will have the option of attending a mussel sampling field trip to assist in a Tennessee Wildlife Resources Agency monitoring of mussel stocks in the Duck River, which is completed on a 5-year cycle. Attendees will be transported to one of the Duck River monitoring sites, provided a box lunch, and the opportunity to see the rich diversity of the Duck River while putting your survey techniques to good use. Attendees will need to bring their own personal wetsuit and snorkeling equipment; a decontamination station will be provided onsite. The cost for this field trip is estimated at \$50 the exact amount will be posted on the registration page: [https://molluskconservation.org/EVENTS/2020WORKSHOP/2020\\_FMCS-Workshop.html](https://molluskconservation.org/EVENTS/2020WORKSHOP/2020_FMCS-Workshop.html). Space will be limited, so make sure to register early.

**Sponsorships:**

The FMCS is a not-for profit society, dedicated to the advocacy and conservation science of freshwater mollusk resources. Our Workshops provide great opportunities to network and build relationships with conservation professionals from state and federal governments, industry, universities, and conservation organizations. The Society has a membership of over 500, of which about 150 generally attend the biennial Workshops. Instructors for the workshops are members of the Society and other leaders in Conservation. These professionals are constantly working to conserve freshwater mollusks and we need your help. We are requesting monetary sponsorships to help cover the costs of the Workshop facilities. Different levels of sponsorship receive different levels of recognition as described in the following table.

Sponsorship Levels		
<i>River</i>	>\$2000	One Complimentary Registration, Logo Displayed at the Welcome Social, Logo on Website Registration Page, Recognition in the Workshop Program
<i>Stream</i>	>\$1000	One Registration Reduced by 25%, Logo Displayed at the Welcome Social, Logo on Website Registration Page, Recognition in the Workshop Program
<i>Eddy</i>	>\$500	Logo on Website Registration Page, Recognition in the Workshop Program
<i>Mussel</i>	>\$100	Recognition in the Workshop Program

**Further Information:**

For further information about the Workshop and inquiries about sponsorship, please contact one of the Workshop co-chairs: Ryan Schwegman, [rschwegman@enviroscienceinc.com](mailto:rschwegman@enviroscienceinc.com) or Lisie Kitchel [lisie.kitchel@wisconsin.gov](mailto:lisie.kitchel@wisconsin.gov).

***We look forward to seeing you in Tennessee!!***